

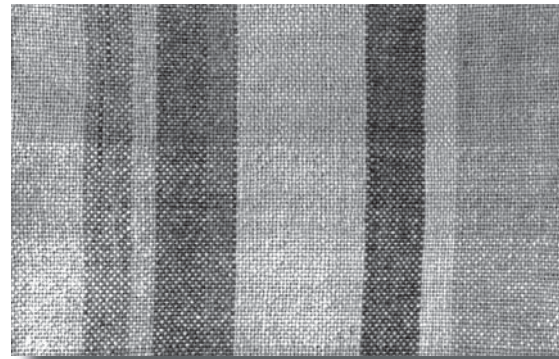
Color Effects on Plain Weave

It's fascinating to explore the effects of color in Plain Weave. The topic is vast, and only a smattering can be presented here. Probably the best known color effects are stripes, checks, and plaids.

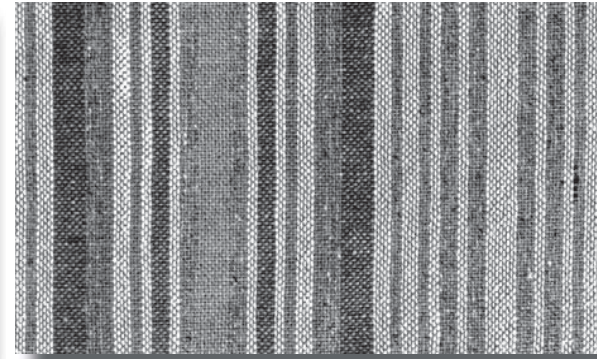
Stripes

Stripes may be narrow, wide, equal, unequal, perfectly balanced, asymmetrical, or a combination of these. Stripes may occur in either the warp or the weft. In a 50/50 weave, it's important to remember that the weft color dramatically affects the vertical stripes, and the warp color affects the horizontal stripes.

It's not difficult to design pleasing striped patterns, but in order to avoid some of the more garish effects that are possible, it's a good idea to sketch out and color the more complex stripe plans on paper before going to the loom. Or, gather your yarns together and warp strands around a dowel, cardboard, or something equivalent, with yarns in the order and width you plan to use. You'll get a good idea of the stripe proportions this way and see where adjustments need to be made.



Woven by Dominic Nash.



Woven by Lois Brant.

Slightly different shades, textures, weights, and/or sheen within a stripe or at the edge of a stripe can make the finished fabric more vibrant and interesting.